

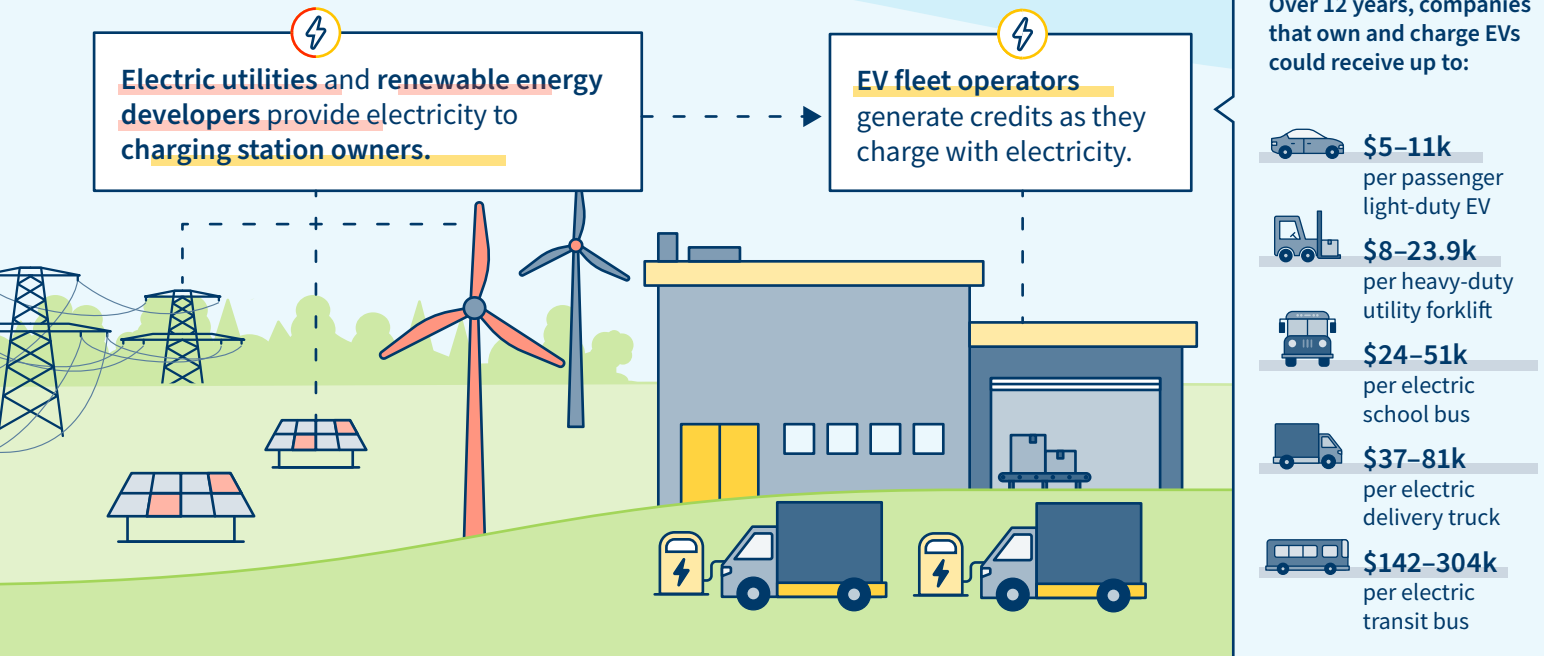


A Clean Transportation Standard (CTS) for the Midwest Electrification Overview



GREAT PLAINS
INSTITUTE

EV Fleets and EV Charging Stations Benefit from a CTS



Support Equitable Electrification and Cleaner Air with Credit Revenue

Policymakers have an opportunity to direct some credit revenue to approved initiatives and incentives.

Initiatives and incentives could include:

- ✓ Programs that **improve air quality** in low-income communities
- ✓ Rebates that **make EVs more affordable** for personal use
- ✓ **Investments** in disadvantaged, low-income, and rural **communities**

In a CTS, residential EV charging credits can be aggregated and directed to achieve policy objectives

According to ICF, a CTS in Illinois could lead to between **\$134 to \$268 million** in new investment in transportation electrification, much of which would be **focused on investments in disadvantaged, low-income, and rural communities.**

Learn more: [BetterEnergy.org](https://www.betterenergy.org)



A Clean Transportation Standard (CTS) for the Midwest

Overview of Benefits



Charging Companies

- Receive direct compensation from credit revenue



The Environment

- Reduced sale of petroleum-based fuels
- Increased investment in lower carbon fuels
- Potential for credit revenue to be applied towards programs that improve air quality



Communities

- Improved air quality (especially in disproportionately affected low-income communities and highway corridors)
- Increase access to EV public transit vehicles and school buses



The Economy

- More jobs
- Increased gross domestic product
- Increased tax revenue



Fuel Consumers

- Better access to EVs for individual use
- Lower carbon fuels often available at a lower cost
- Increased use of domestically produced fuels reduces reliance on imported oil



Transit Operators and School Bus Operators

- Better access to affordable EV fleets
- Potential to receive direct compensation from credit revenue

Example Economic Benefits



According to a study by Horizon Climate Group, a CTS in Illinois has the potential to annually generate:



7,000
jobs



\$622 million
in labor income



\$1.2 billion
in gross domestic product



\$89 million
in federal tax

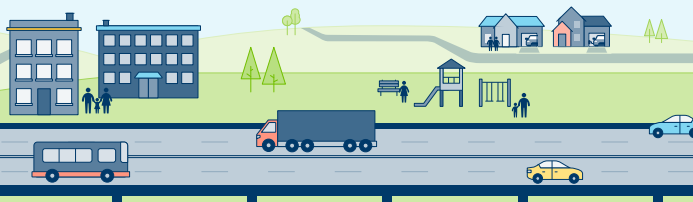


\$118 million
in state and local tax

Air Quality Benefits

Transportation is the highest polluting industry. Lower-income communities and highway corridors are unequally affected by poor air quality.

CTS policies reduce GHG emissions by holding polluters accountable.

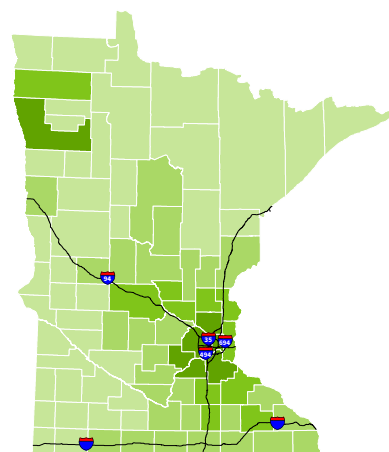


Estimated pollution reduction from a CTS in Minnesota

— Interstates

PM2.5 Reductions

- 0.0015ug/m³ or less
- 0.0016–0.003ug/m³
- 0.0031–0.005ug/m³
- 0.0051ug/m³ or more



Learn more: [BetterEnergy.org](https://www.betterenergy.org)